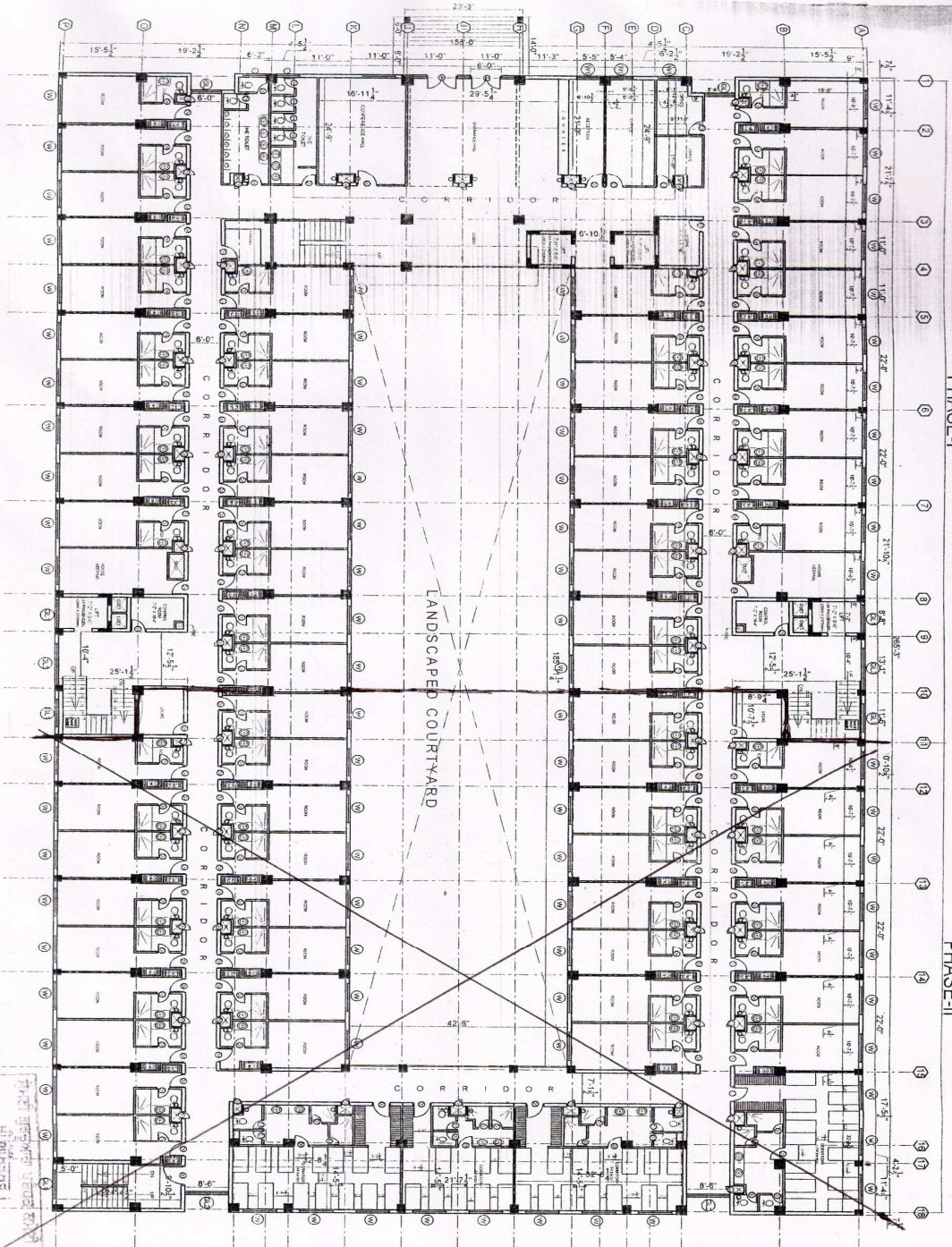


GROUND FLOOR PLAN



EXISTING
PHASE-I

PROPOSED
PHASE-II

LANDSCAPED COURTYARD

<p>PLOT AREA = 39885 SQ. FT. GROUND FLOOR AREA = 34445 SQ. FT. = 3838 SQ. YARDS FIRST FLOOR AREA = 34445 SQ. FT. = 3838 SQ. YARDS SECOND FLOOR AREA = 34445 SQ. FT. = 3838 SQ. YARDS</p>	<p>THIRD FLOOR AREA = 34445 SQ. FT. = 3838 SQ. YARDS FOURTH FLOOR AREA = 34445 SQ. FT. = 3838 SQ. YARDS BASEMENT AREA = 41909 SQ. FT. TOTAL COVERED AREA = 214834 SQ. FT. F.A.R. = 1.7 GROUND FLOOR COVERAGE = 32% NO. OF CARS = 171 DETAIL OF ROOMS:- ON GROUND FLOOR = 70 ON 1ST FLOOR = 87 ON 2ND FLOOR = 88 ON 3RD FLOOR = 89 ON 4TH FLOOR = 89 TOTAL ROOMS = 424 NO. OF BEES IN DOMESTICITY IN GROUND FLOOR = 50</p>
------------------------------------------------------------------------------------------------------------------------------------------------------------------------------------------------------------------	-----------------------------------------------------------------------------------------------------------------------------------------------------------------------------------------------------------------------------------------------------------------------------------------------------------------------------------------------------------------------------------------------------------------------------------------------------------------------------------------------

NOTE
this drawing is the property of architects atelierarchitects atelier pvt. ltd / archi. team projects pvt. ltd & cannot be altered, used or copied without the written consent of architects atelier.

FILE NAME:- server /

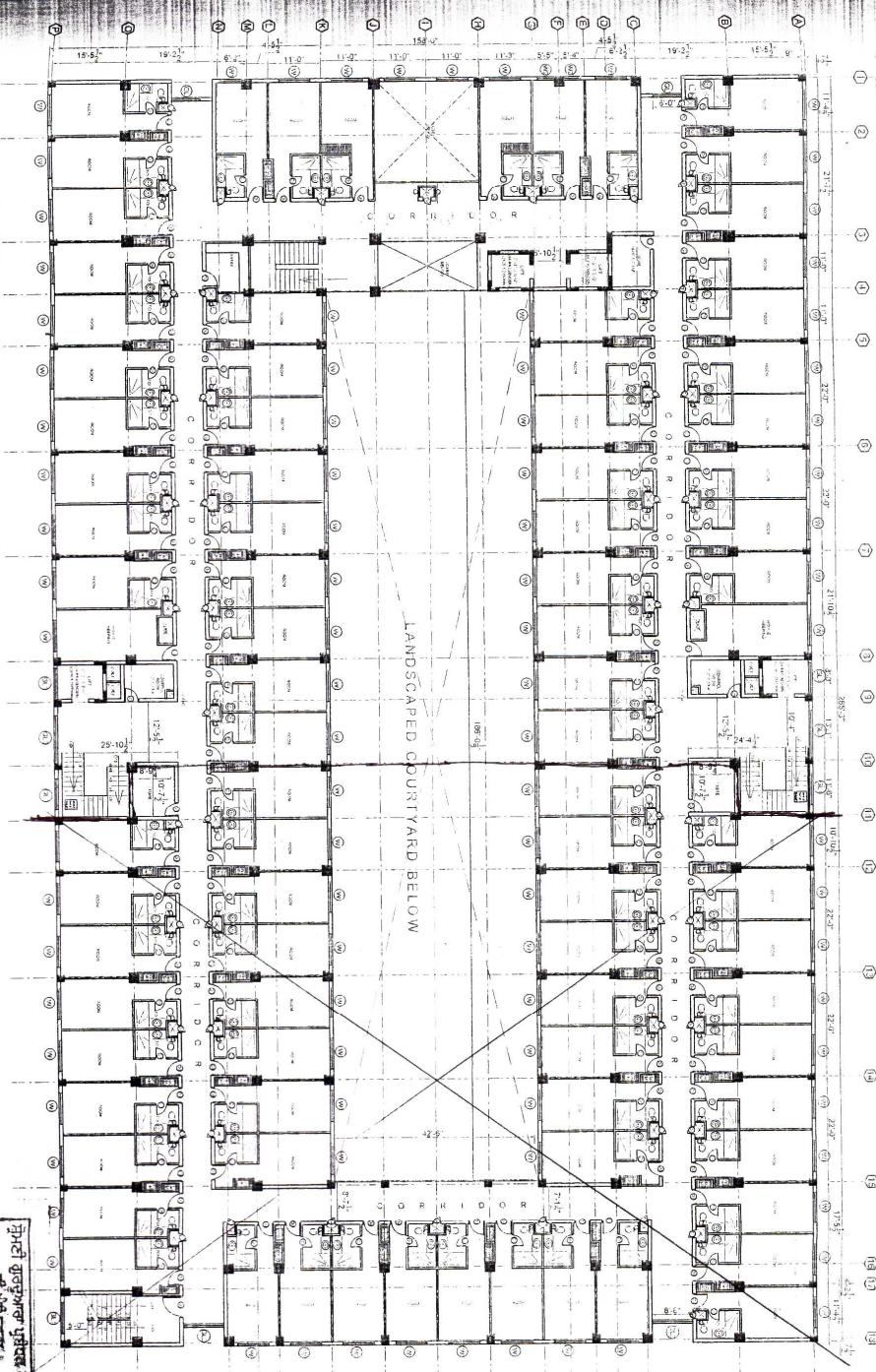
No. 03
SARAJI BUILDING AT,
AMANDPUR SAHIB,
PHASE-I & PHASE-II
GROUND FLOOR PLAN

DATE: 28 SEP 2015
DRAWN BY: M. N. S.
CHECKED BY: M. N. S.
SCALE: N.T.S.
SACR. NO. N.T.S.
DATE: SEP 2014

architects atelier
architects atelier pvt. ltd.
archi. team projects pvt. ltd.

28 SEP 2015
M. N. S.

FIRST FLOOR PLAN



EXISTING
PHASE-I

PROPOSED
PHASE-II

LANDSCAPED COURTYARD BELOW

NO.	DATE	REVISION
1	SEP 2014	COMPLETION OF DRAWING
2		
3		

NOTE
This drawing is the property of the architect's studio/contractor/owner. It shall not be altered, used or copied without the written consent of architect/studio.

FILE NAME: - Sarai /

SARAI BUILDING A1, ANANDPUR SAHIB.
PHASE-I & PHASE-II
FIRST FLOOR PLAN

DATE: 15 SEP 2014
DRAWN BY: N.S.
CHECKED BY: N.S.
SCALE: AS SHOWN

26 Sep 2014

26 Sep 2014

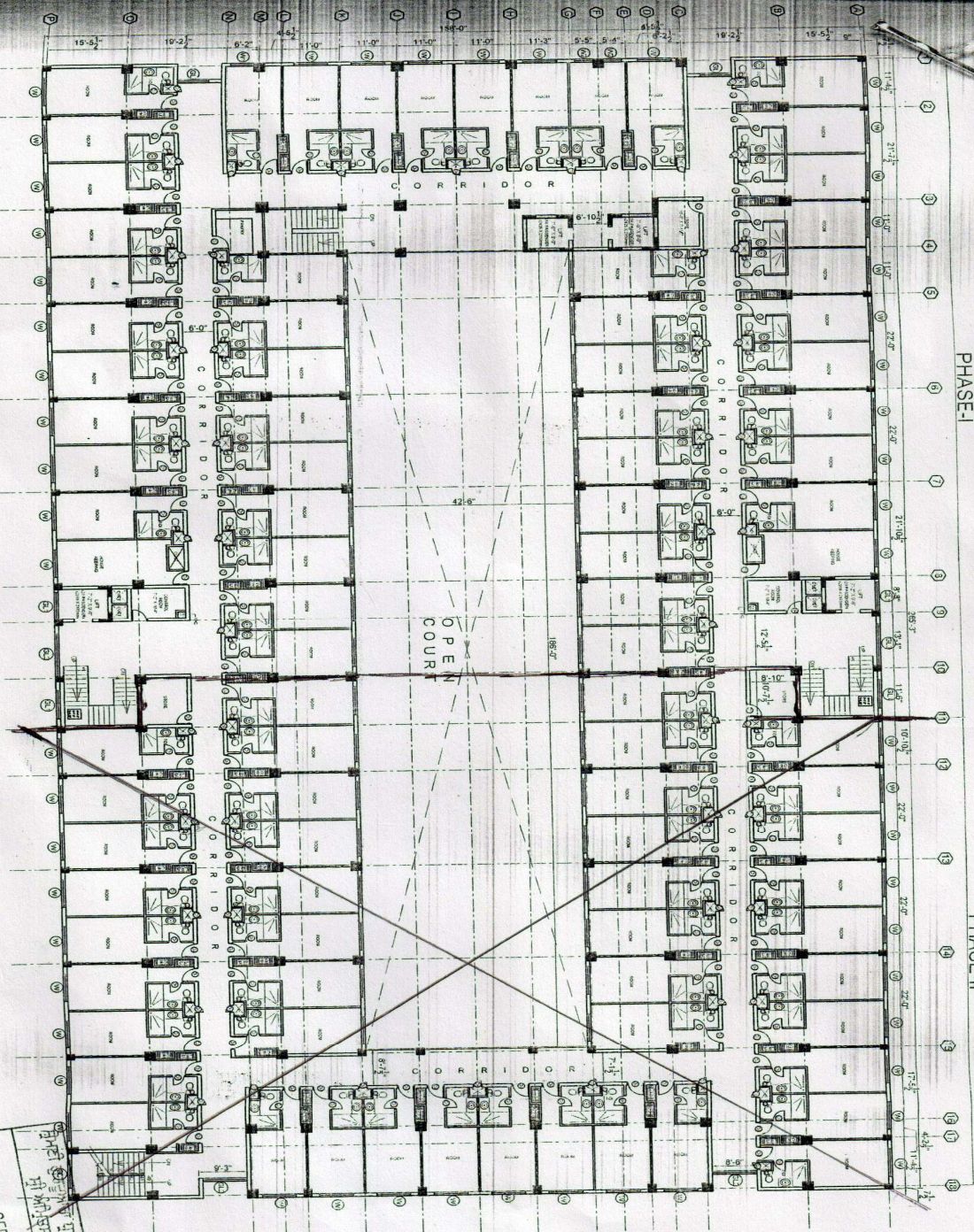
26 Sep 2014

26 Sep 2014

EXISTING
PHASE-I

PROPOSED
PHASE-II

SECOND, THIRD & FOURTH FLOOR PLAN



No.	DATE	DESCRIPTION
1.	26 SEP 2016	JOINT SEE AND REVISIONS
2.		
3.		

NOTE

This drawing is the property of architects atelier/pvt. ltd. / arch. tech projects pvt. ltd. & cannot be altered, used or copied without the written consent of architects atelier.

FILE NAME - server/

The Date Revision
SARAI BUILDING AT,
ANANDPUR SAHIB,
 THE PHASE II & PHASE I
 SECOND, THIRD & FOURTH FLOOR PLAN

Draw No	Date	Scale	Drawn	Check
05	SEP 2014	1:1		

architects atelier
 architects atelier pvt. ltd
 arch. tech projects pvt. ltd

26 SEP 2016
 27/09/2016
 27/09/2016