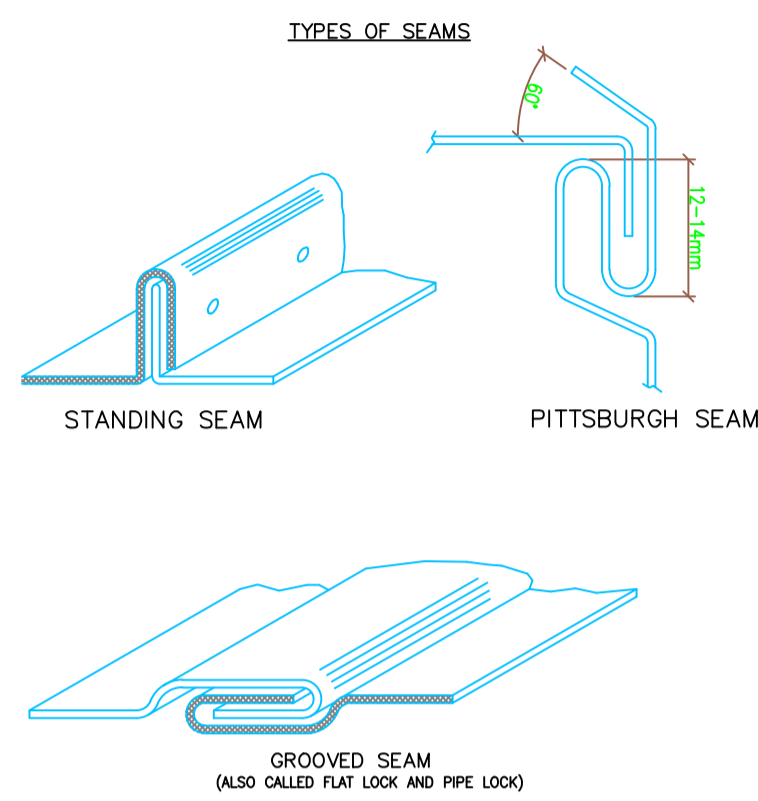
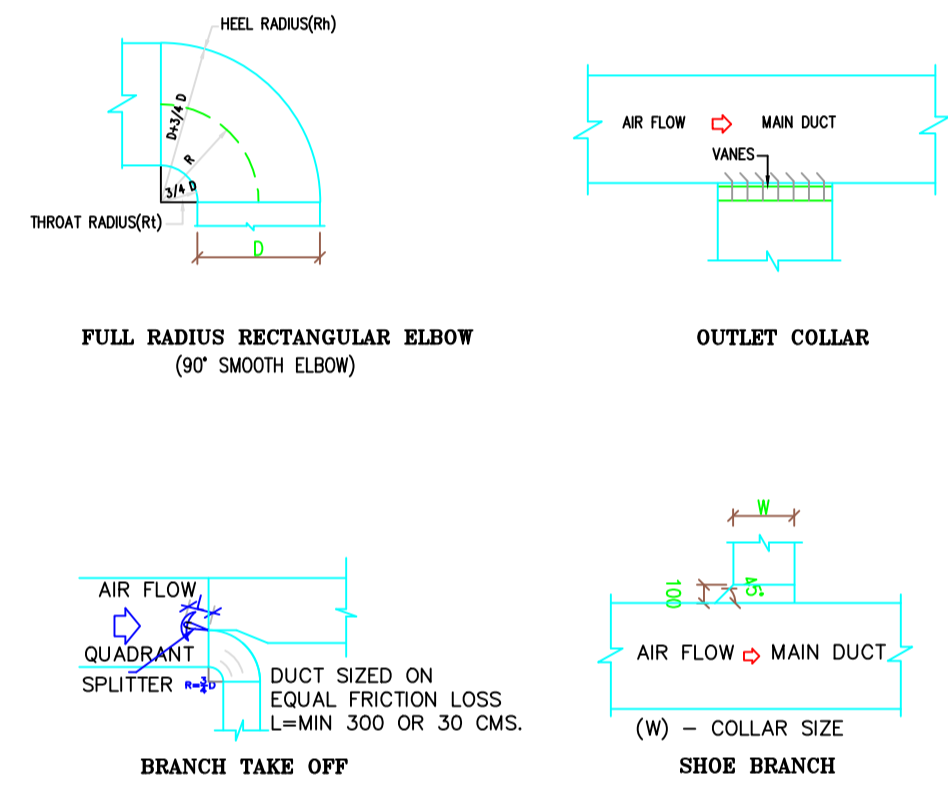


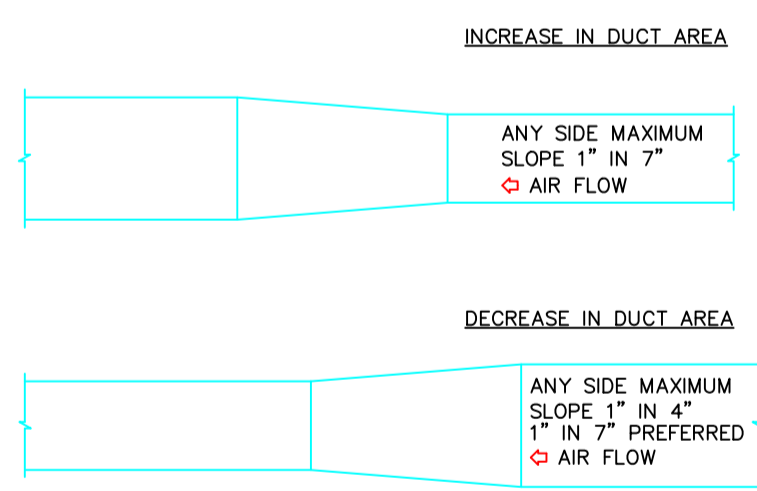
DUCT FABRICATION



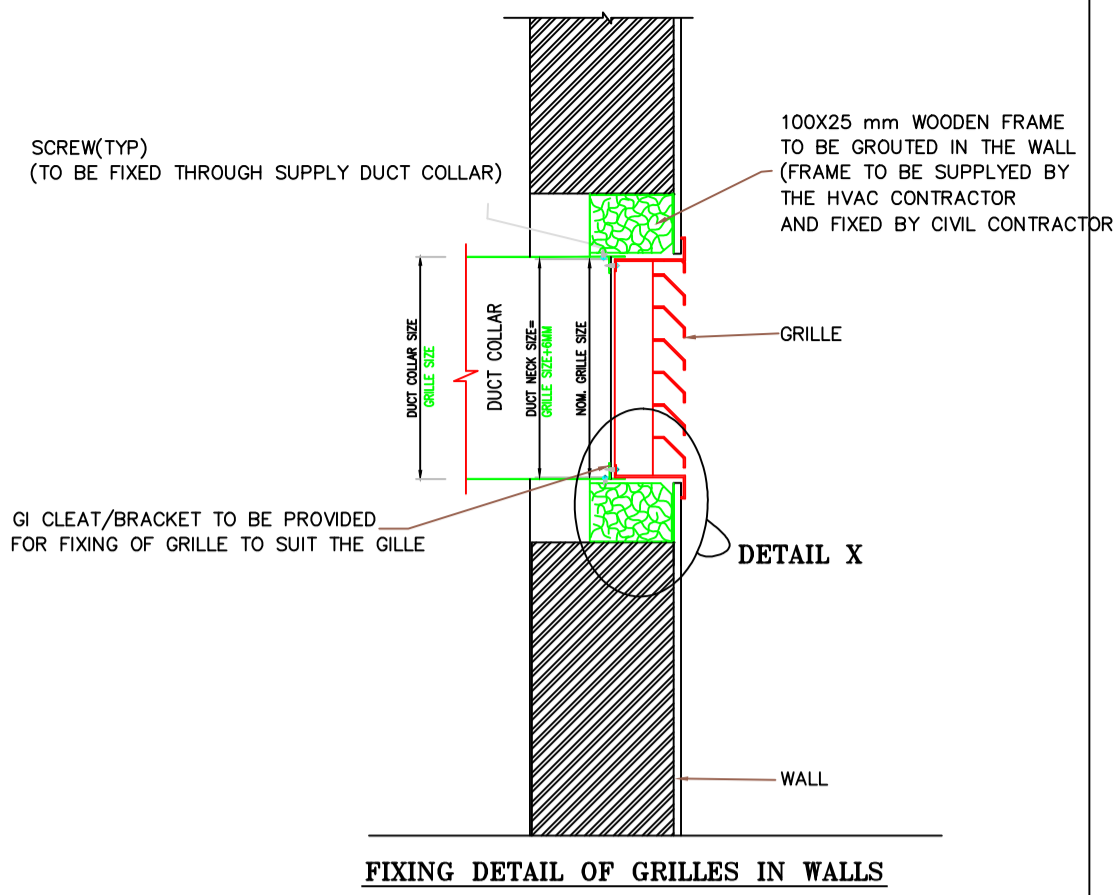
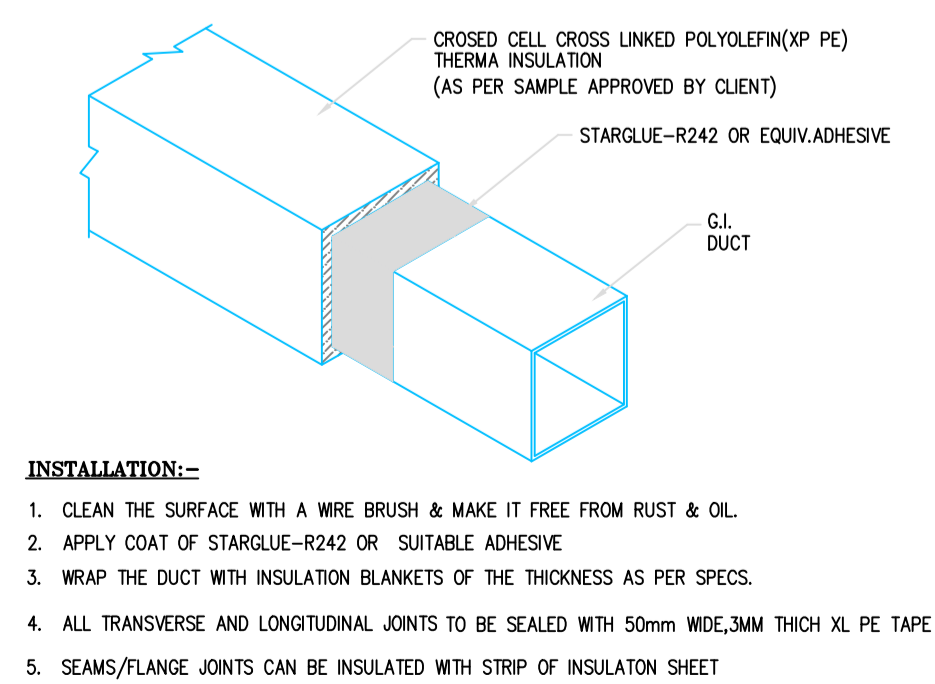
DUCT FITTINGS



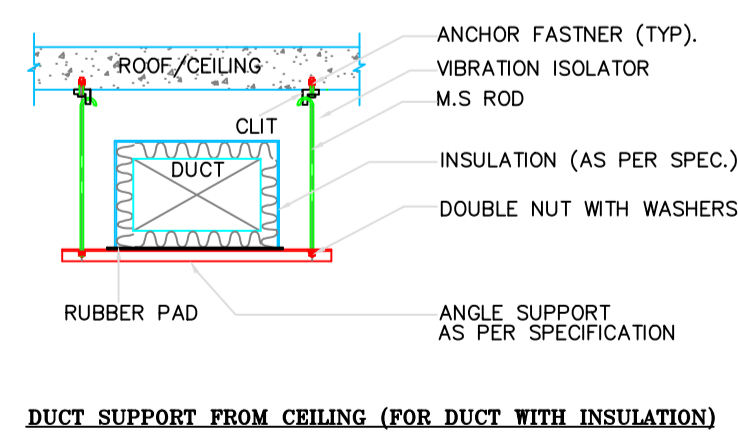
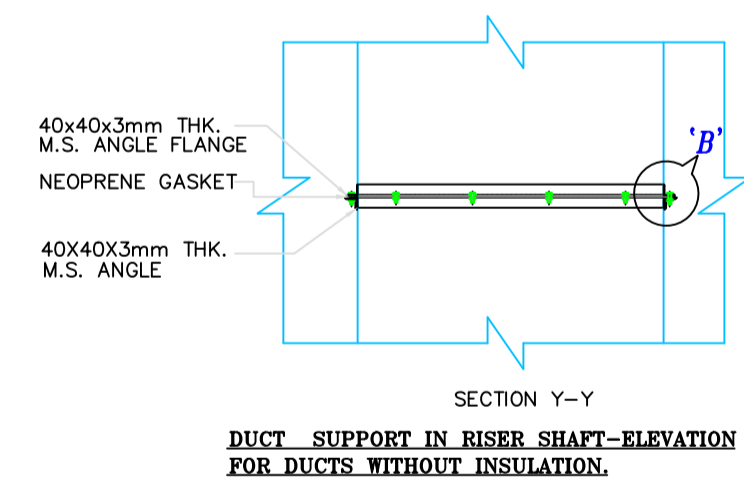
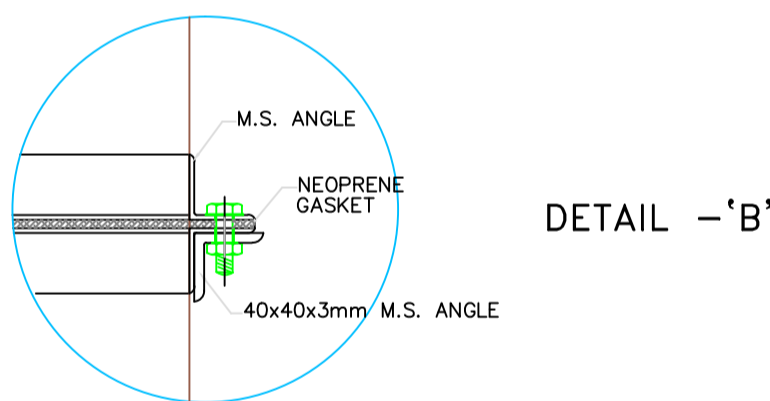
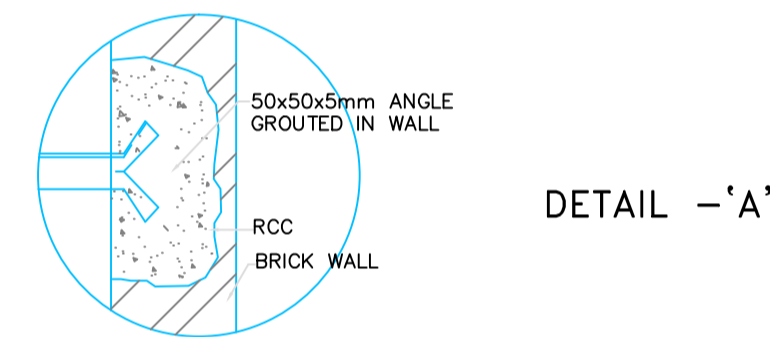
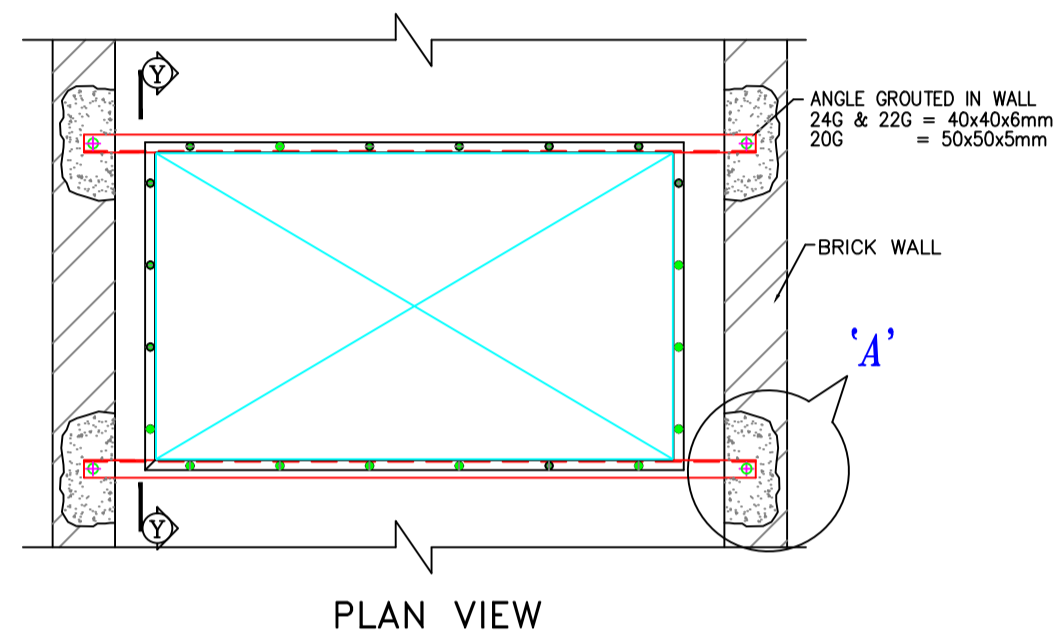
STANDARD DUCT TRANSFORMATION



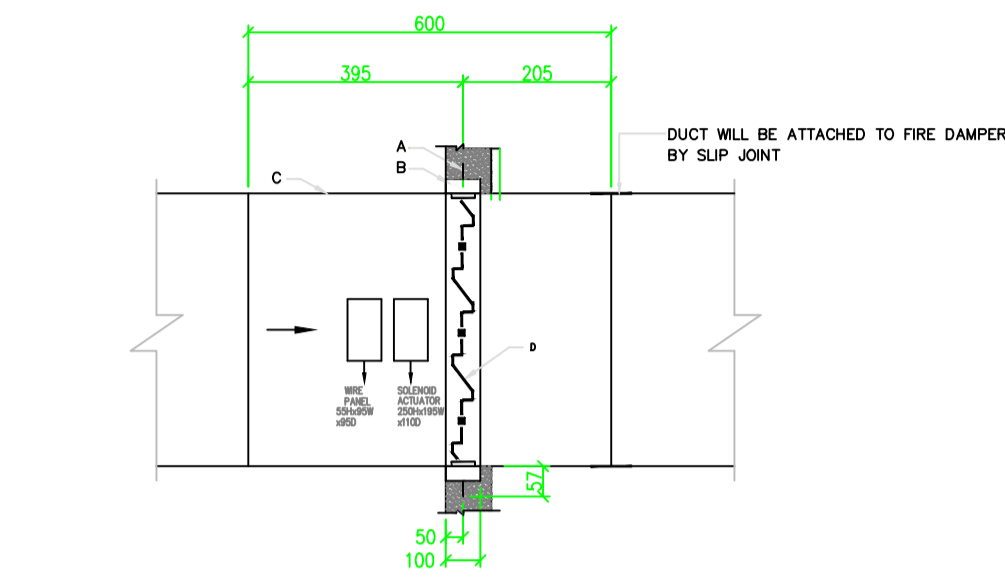
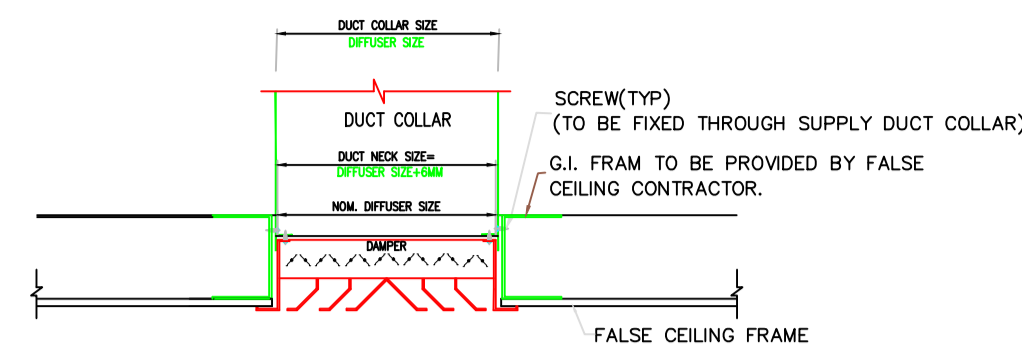
DUCT INSULATION



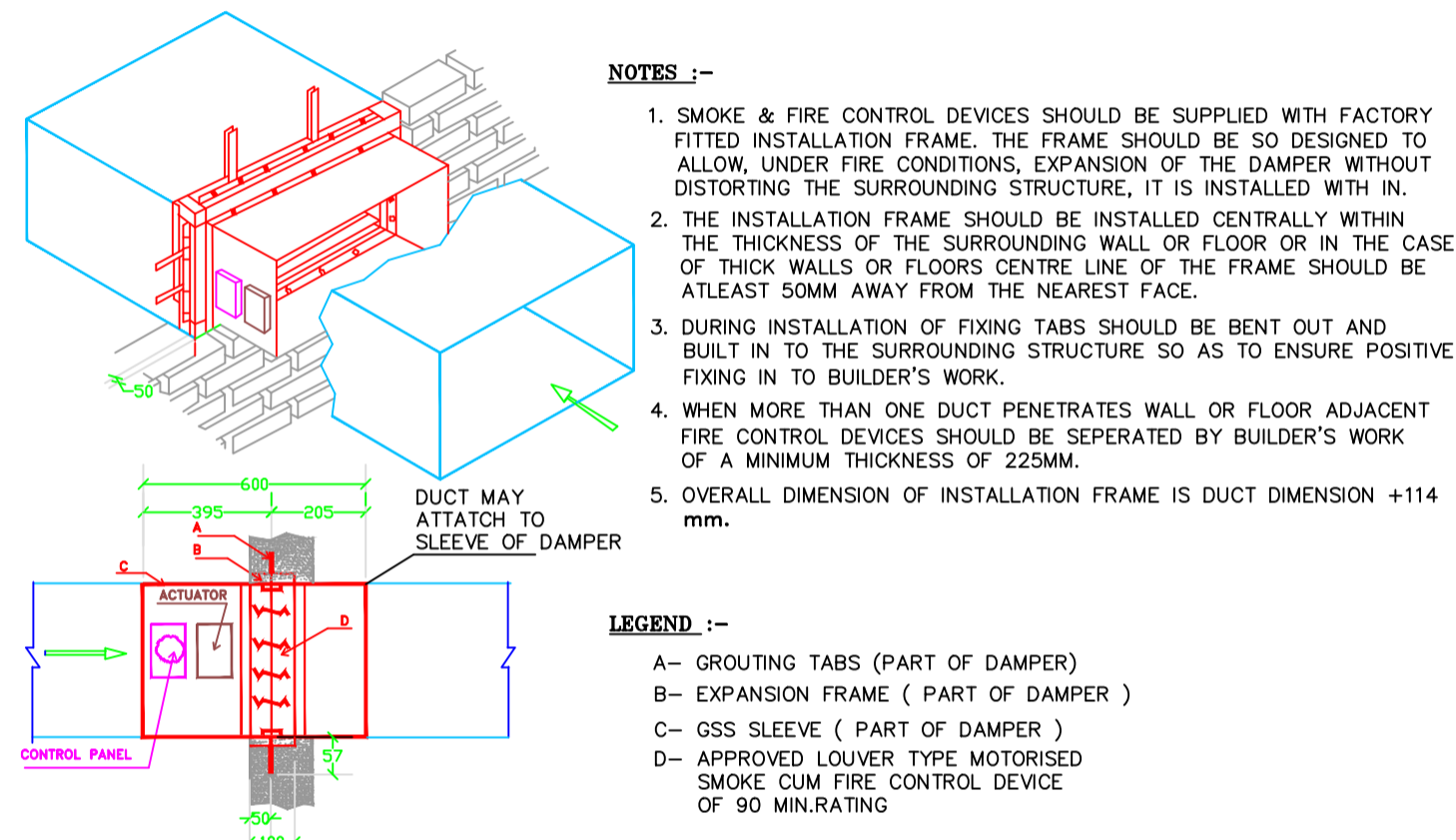
DUCT SUPPORTS



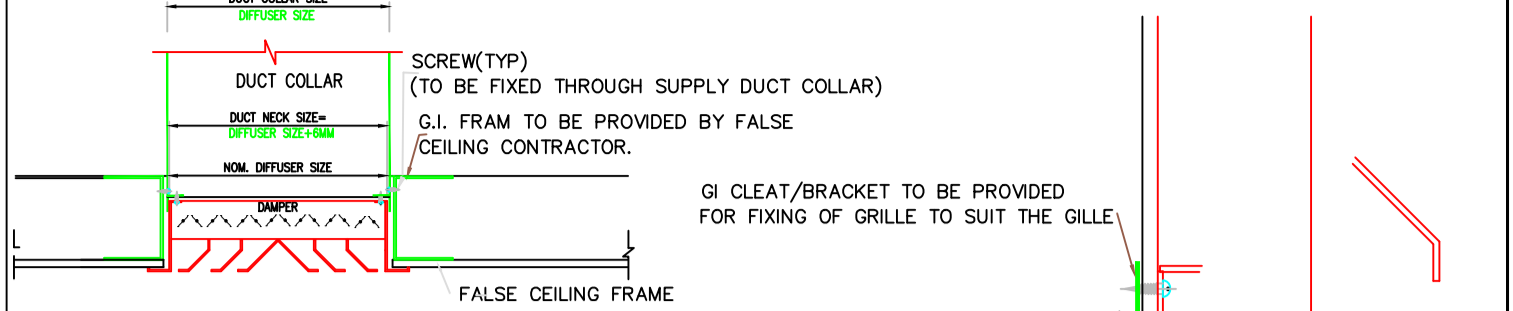
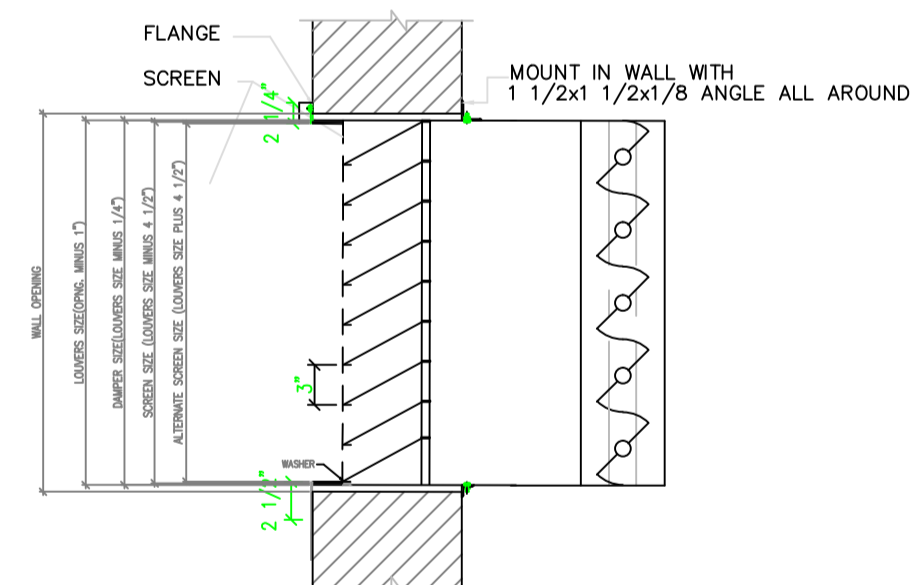
DUCT ACCESSORIES



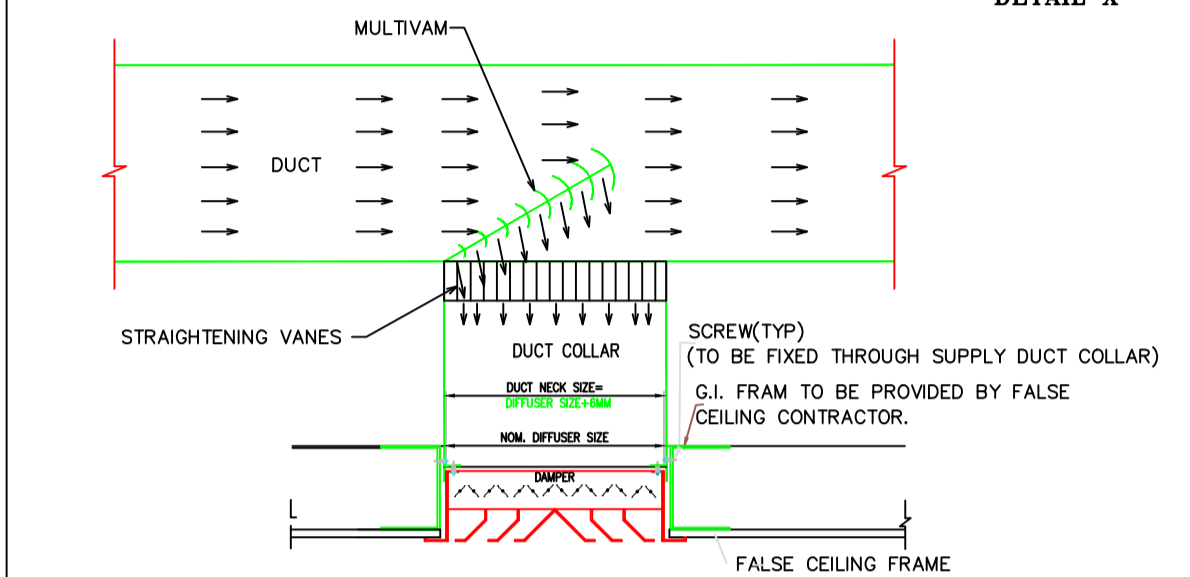
INSTALLATION DETAILS OF WALL MOUNTED FIRE DAMPERS FOR SUPPLY, RETURN/EXHAUST AIR.



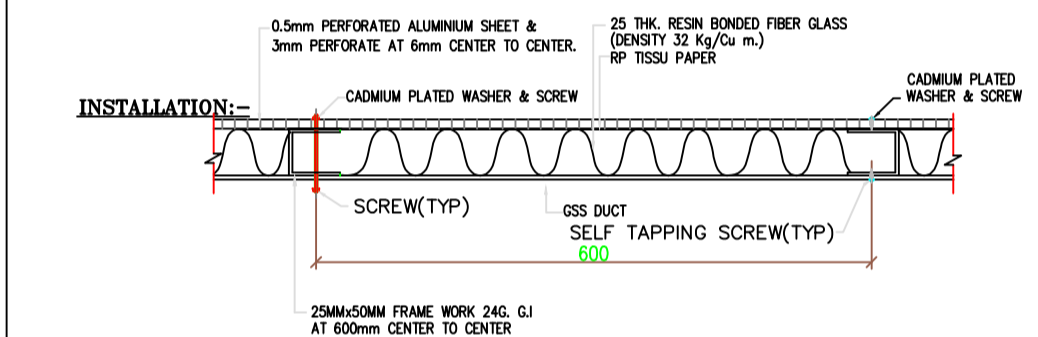
OUT DOOR AIR LOUVER AND SCREEN



DIFFUSERS/GRILLES FIXING DETAILS

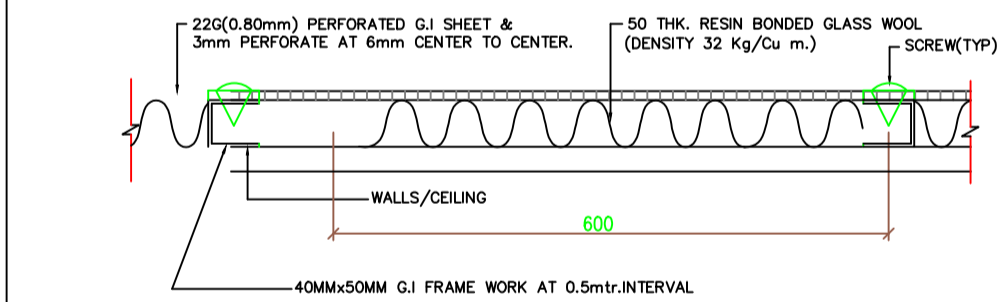


ACOUSTIC LINING OF DUCT



- FIX 25mmx25/50mm G.I FRAME WORK OF 24 GAUGE AT 600MM INTERVAL.
- THE DUCT SURFACE SHALL BE CLEANED FROM INSIDE.
- APPLY A COLD SETTING ADHESIVE COMPOUND OVER THE FRAME/DUCT. THE ADHESIVE SHALL BE NON FLAMMABLE VAPOUR PROOF,ODOURLESS TYPE.
- FIX INSULATION MATERIAL OF SPECIFIED THICKNESS OVERLAPPED WITH R P TISSUE PAPER OVER IT AND THEN COVERING THE MATERIAL WITH 26G.PERFORATED ALUMINIUM SHEET & SHOULD HAVE 2-3mm DIA PERFORATION AT 3 TO 4 mm CENTER DISTANCE WITH THE HELP OF SELF TAPPING SCREWS AND SHALL BE NEATLY FINISHED TO GIVE TRUE SURFACE FINISH.

ACOUSTIC LINING OF WALLS FOR AHU ROOM



- INSTALLATION:-**
- FIX 25mmx50mm G.I FRAME WORK 24G. AT 600mtr.INTERVAL. USING SUITABLE GUTTIES & BRASS SCREWS.
 - FILL EACH RECTANGLE WITH 50mm GLASS WOOL AND COVERED WITH R.P TISSUE PAPER.
 - TIE WITH 24G. G.I WIRES AT 300mm INTERVL.
 - THEN COVER WITH 24G PERFORATED G.I HAVING 3mm PERFORATION AT CENTERS.

DUCT SEALING DETAIL

HVAC CONSULTANTS:-
NARINDER SINGH CONSULTING ENGINEERS
G-128,NARAINA VIHAR
NEW DELHI-110028
TEL: 25794313
E-mail: hvacconsultant@hotmail.com

PROJECT:-
CONSTRUCTION/ EXTENSION OF GURU RAM DAS LANGAR HALL AT SRI HARMANDIR SAHIB, AMRITSAR

TITLE:-
SHEET METAL DUCT WORK DETAILS

SCALE NTS	DATE 27.3.18	DESIGN NS	DRAWN SARVESH
DWG.NO. HVAC-10	REV. 2	REV. DATE 21.5.22	CHECKED N.SINGH
FOR: TENDER DRAWING			